

Apple Mail

1. Open Mail
2. Click **“Mail”** and select **“Preferences”**

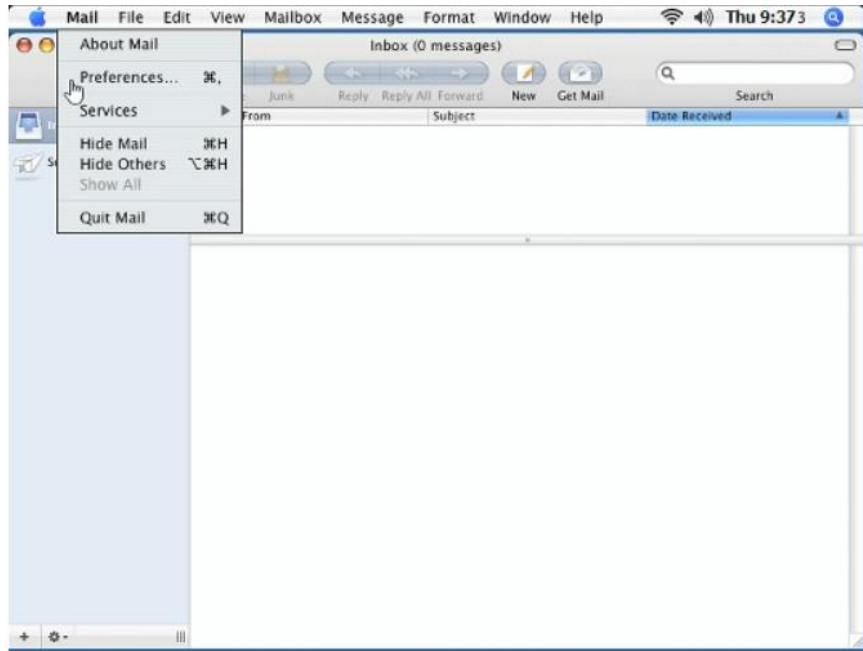


Fig. 3-1: Opening Apple Mail Preferences

3. Click **“Accounts”** and then **“+”** to add an account

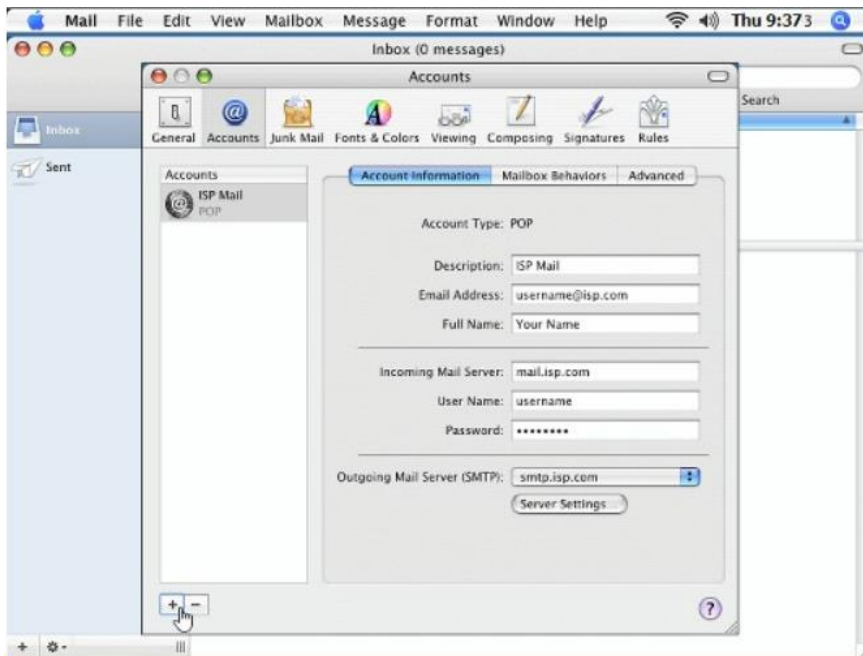


Fig. 3-2: Adding an Account

4. Fill in the information for “**Account Information**”

*Incoming and outgoing mail servers should both be “mail.(your e-mail’s domain)”

ex: an e-mail of “example@d-pcomm.net” would have a mail server of “mail.d-pcomm.net”

an e-mail of “example@cass.net” would have a mail server of “mail.cass.net”

an e-mail of “example@tc3net.com” would have a mail server of “mail.tc3net.com”

*User Name should be your full e-mail address

*In Outgoing Mail Server, click “**Use Authentication**” and enter your User Name and Password again

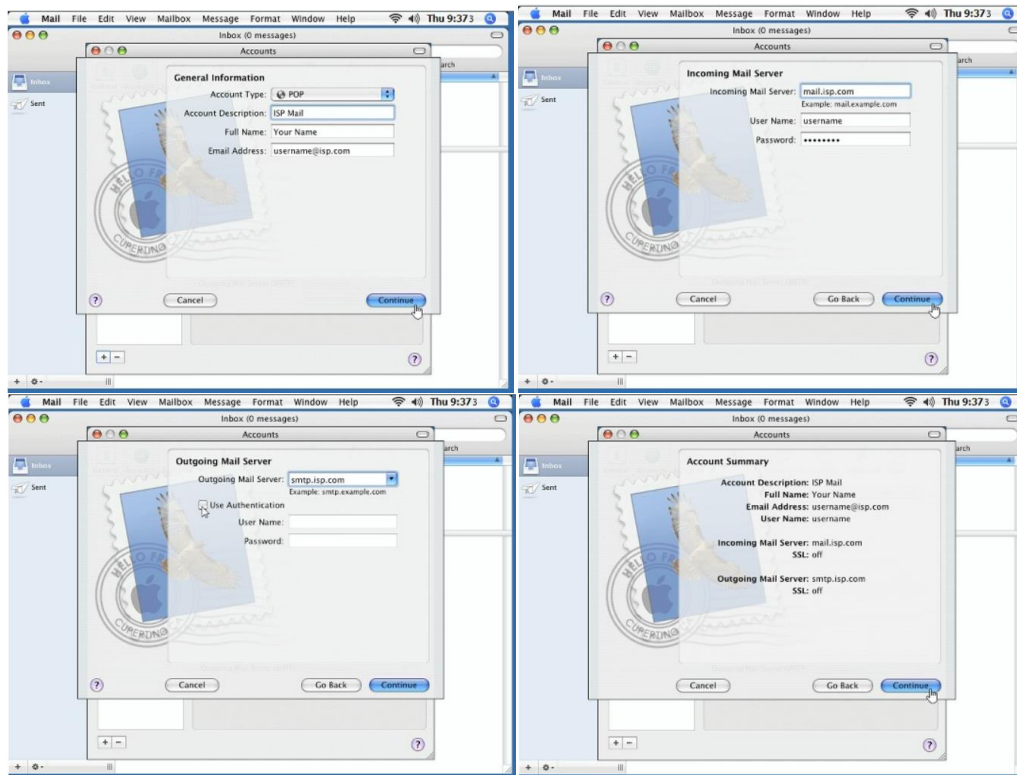


Fig. 3-3 to 3-6: Apply Server Credentials

5. Click “**Server Settings...**”

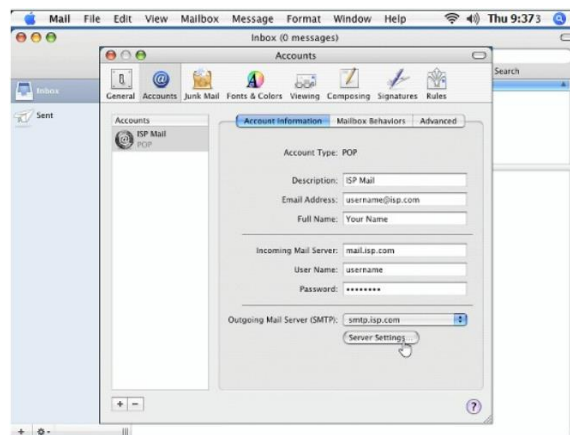


Fig. 3-7: Accessing Server Settings

6. Verify the outgoing mail server is still correct
7. **Outgoing Server Port should be 587**

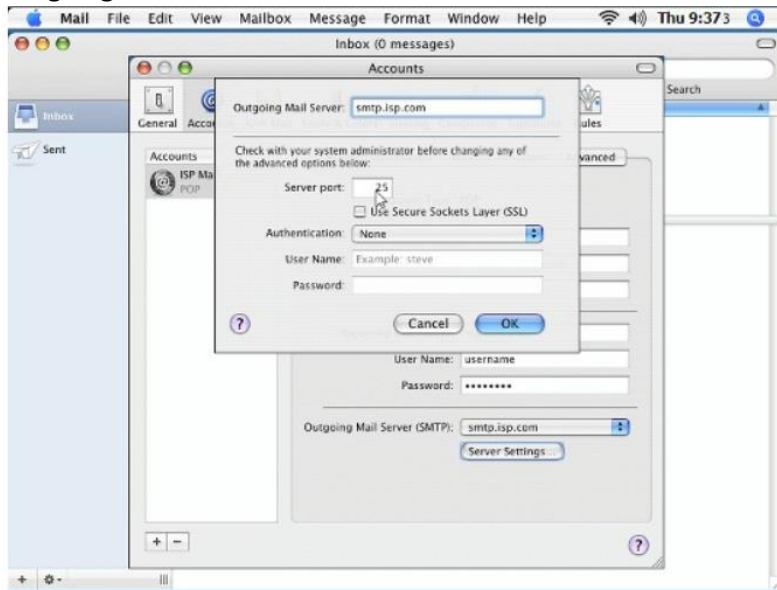


Fig. 3-8: Changing Outgoing Server Port

8. Make sure that **“Use Secure Sockets Layer (SSL)”** is disabled
9. Authentication should be set to **“Password”** and the User Name (your full e-mail address) and password are filled in
10. Click **“OK”**
11. Click the **“Advanced”** tab and make sure that SSL is disabled on the incoming server, as well

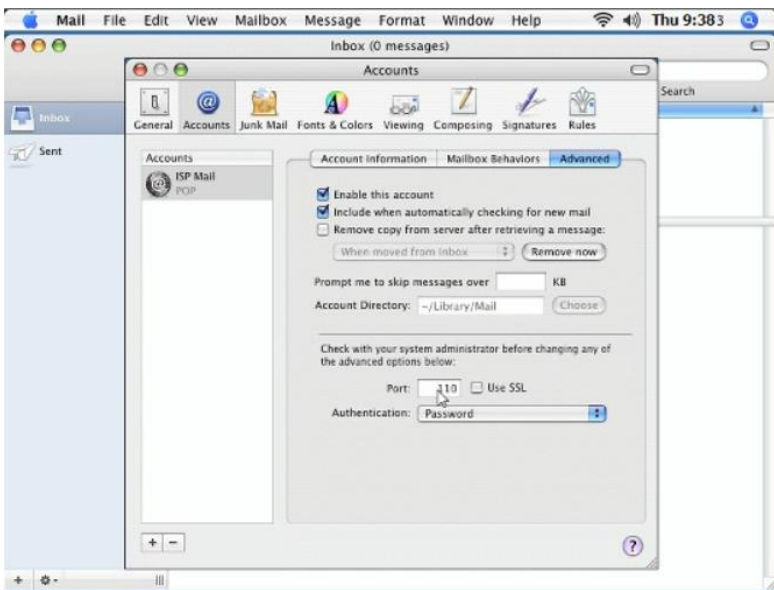


Fig. 3-9: Verifying Incoming Server Settings

12. Close the Accounts window
13. Compose and send a self-addressed e-mail to verify that Incoming and Outgoing Servers are working properly.